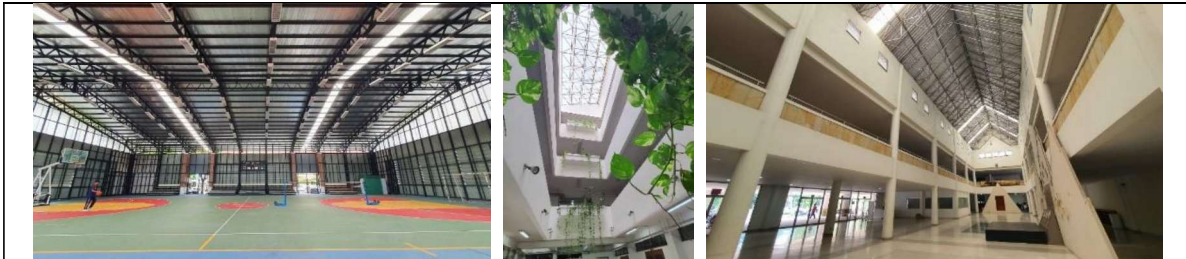




University : Phranakhon Si Ayutthaya Rajabhat University (ARU)  
Country : Thailand  
Web Address : www.aru.ac.th

## [2] Energy and Climate Change (EC)

### [2.9] Elements of Green Building Implementation as Reflected in All Construction and Renovation Policies



Transparent Roof and Light Control Panel (ARU, Thailand)



Visual Comfort Using Natural Light Design (ARU, Thailand)



Outdoor seating for students is adequate.

#### Description:

The policy of construction and renovation of the ARU Buildings Department is to (1) maximize the use of natural light by using glass windows with light control film and a light-shaded panel to control the penetration of heat from outside the buildings. (2) Using a slatted design to filter light. (3) Outdoor space design and seating were also designed to reduce electricity use. (4) Air flows in and out through building to help reduce the temperature inside the building and indirectly reduces electricity use.